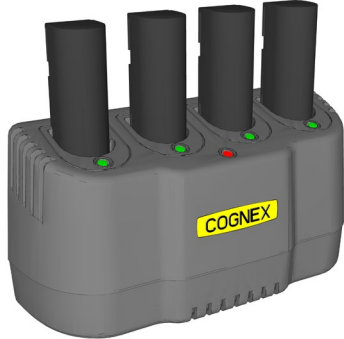


Quick Start Guide

Multi-Battery Charger is an accessory to the DataMan 8000/9000 reader family. With this charger, you can simultaneously charge up to four NP-100 Li-ion batteries* used in wireless handheld readers.



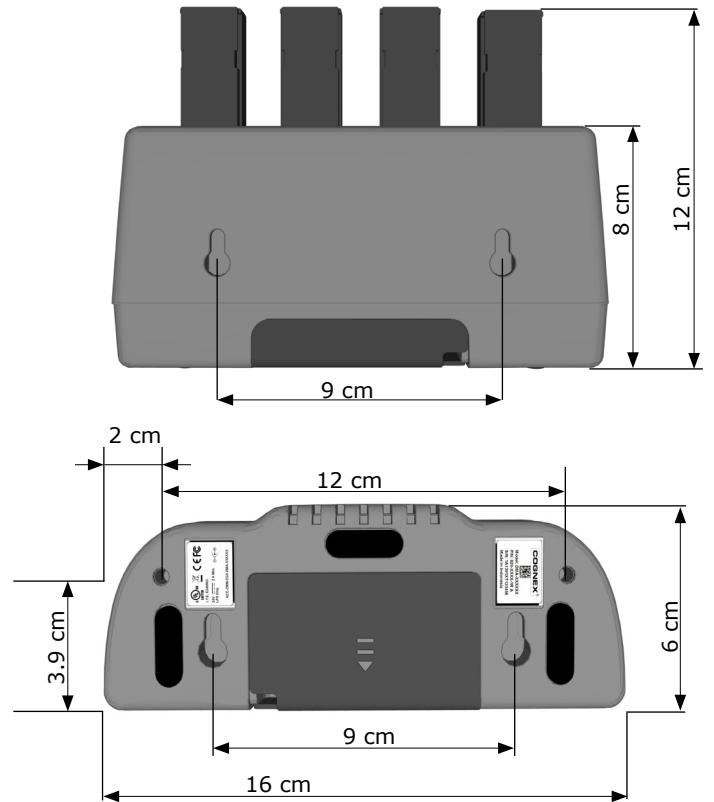
Features:

- Four independent charging paths that can operate separately or simultaneously
- Automatic connection detection for empty batteries
- Automatic charging cycle starts without user interaction

- Maximum charging time:
3 hours for **NP-100 2200mAh** batteries
4 hours for **NP-100 3070mAh** batteries
- Very robust industrial construction
- Dust-protected housing
- Resistant against vibration, drop, and corrosive oil

* batteries not included

Dimensions

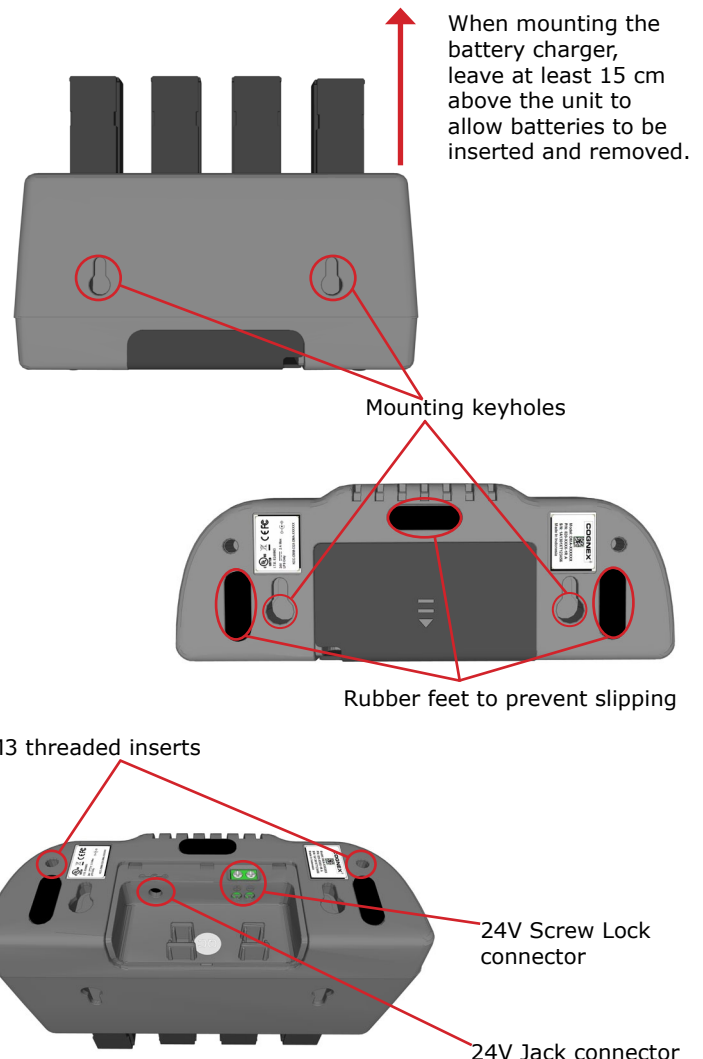


Specifications, Compliance and Certification Information

Specifications		
Weight	180 g (without batteries)	
Operating Temperature	0°C - 40°C (32°F - 104°F)	
Storage Temperature	-40°C - 60°C (-40°F - 140°F)	
Maximum Humidity	95% (non-condensing)	
IP Rating	IP40	
Vibration Tolerance	0.2" (5.1mm) p-p from 5Hz to 22Hz acceleration of 5g from 22Hz to 300Hz	
Drop Tolerance	<4 drops from 1 meter at 25°C (device may lose contact with batteries during drop/vibration)	
Supported Batteries	NP-100 2200mAh NP-100 3070mAh	
Power	input	<ul style="list-style-type: none"> • THT style 1.3/3.5mm DC Jack • 5 mm pitch Terminal Block Header - recommended wire diameter is 14-18 AWG
	requirements	24VDC, max 1.0 A
	consumption	up to 24W

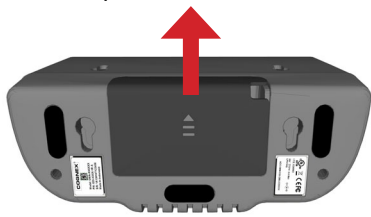
Regulator	Specification
USA	FCC Part 15, Subpart B, Class B, ETL
Canada	Industry Canada ICES-003, Class B, ETL
European Community	CE, EN55022 Class B
Australia/NZ	C-TICK AS/NZS CISPR 22/ EN 55022 for Class B Equipment
Japan/VCCI	J 55022, Class B
Korea	KCC

Immunity standards EN55024 ITE **Battery temperature monitoring** JEITA requirements



Connecting Power

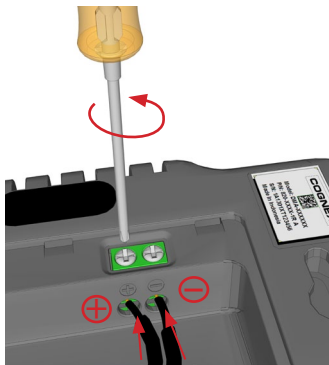
To connect a power supply to the battery charger, follow these steps:



1 Remove the power supply cover.

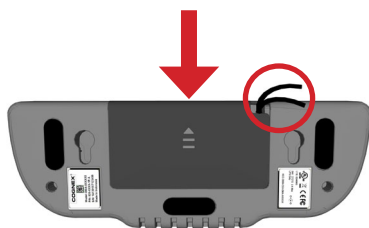
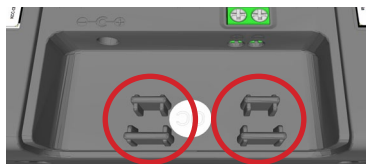
2 Connect the 24VDC power supply* to the 24V Jack connector.

* Power supply not included. Use your compatible 24V power supply or the DMA-24VMBC-xx (See Accessories).



3 If you do not have a 24VDC power supply with a Jack connector, first loosen the terminal locking screws, connect two wires to the 24V terminal block, and then secure the wires using the locking screws.

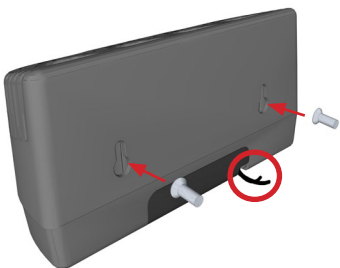
4 Secure the wires using the cable fixtures.



5 Close the power supply cover carefully, making sure you do not damage the wires threaded out the opening in the cover.

Mounting

Use the mounting keyholes or the M3 threaded inserts to securely mount the Multi-Battery Charger on a wall, or other flat, solid surfaces.

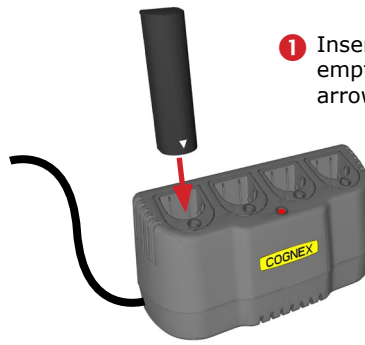


Make sure that the wires are not pinched or bent and the charger is not mounted in a corner.



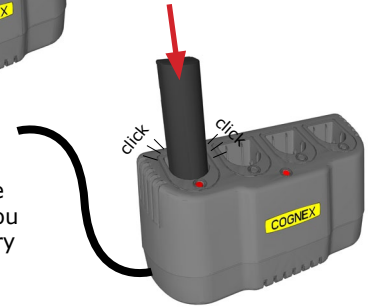
Charging Batteries

To charge your NP-100 Li-ion batteries, follow these steps:



1 Insert an NP-100 battery into an empty charging slot with the indicator arrow on the battery pointing down.

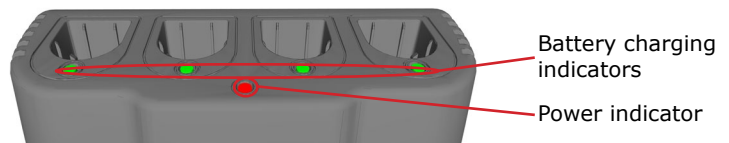
2 Press down the battery until you hear the battery snap in place.



3 If the charger is connected to a power source and the battery needs charging, the charging sequence starts automatically, indicated by the red battery charging indicator.

4 To remove a battery from the charger, simply pull out the battery from the charging slot.

Charging Indicators



The LED indicators on the charger provide the following information:

	Power indicator	Battery charging indicator
	Power supply not present	No battery/Unable to detect battery
	-	Battery charging is complete
	Power supply present, ready for charging	Battery is charging
	-	Abnormal Battery Temperature/Power supply fault

Accessories

NP-100 battery for DataMan8000/9000 wireless readers (2200 or 3070mAH)

Power Supply for Multi-Battery Charger (24V, 2.5Amps)
Product ID: DMA-24VMBC-xx

